

PRODUCT DESCRIPTION

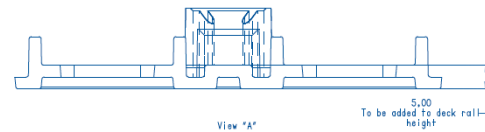
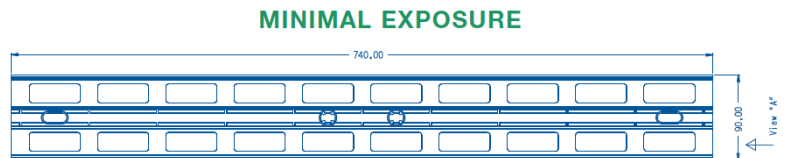
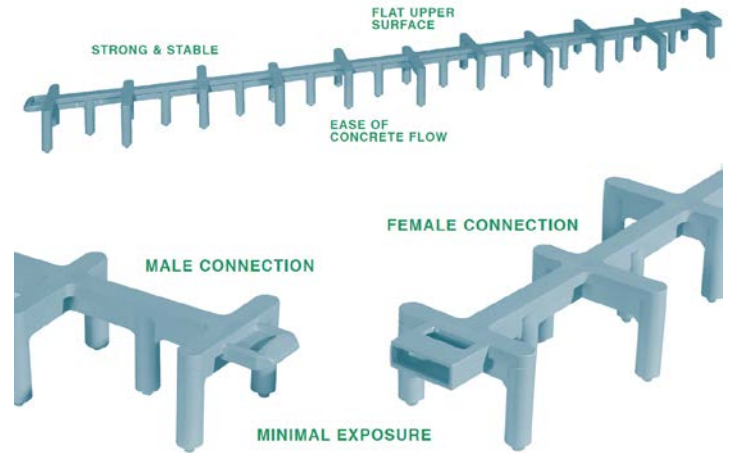
The 750mm long plastic deck rail is a continuous spacer for formwork applications. Designed with sets of vertical legs at approximately 75mm centres and another vertical leg in between the sets; the deck rail is strong and stable, yet provides minimum exposure. Another feature is the male and female connection at either end to join rail on rail to any given length. Once connected the clip will not separate; a must for large projects. Clipping bar chairs onto the reinforcement or "chairs up" after the reinforcement has been placed is now eliminated.

AREAS OF APPLICATION

- Suspended Decks
- Precast or Tilt-Up Panels
- In situ and Precast Beams
- Slabs on Blinding Concrete

PROPERTIES

- Closed cell structure
- CFC free
- Excellent dimensional stability
- Resistant to most chemicals
- Non toxic and odourless
- No adhesion to sealants
- Rot proof
- Available in FR grades
- Available in customised shapes
- Excellent aging characteristics



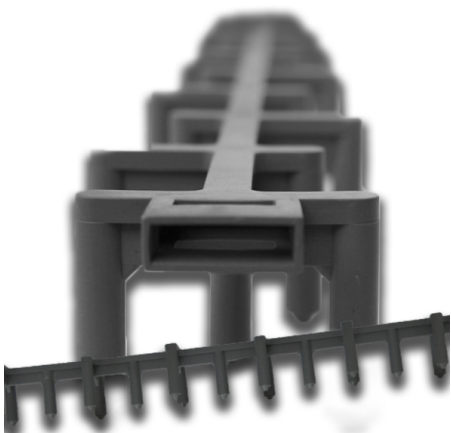
SIZE AVAILABILITY

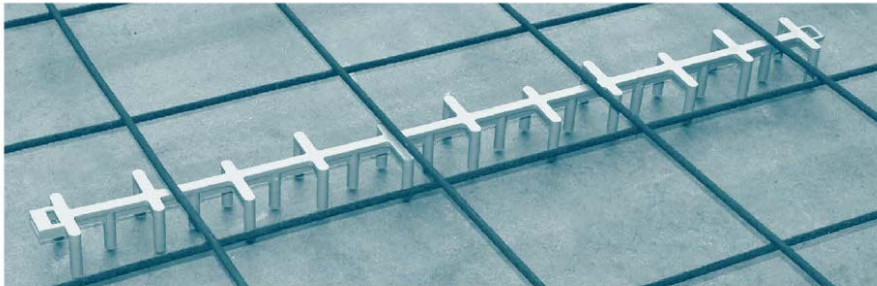
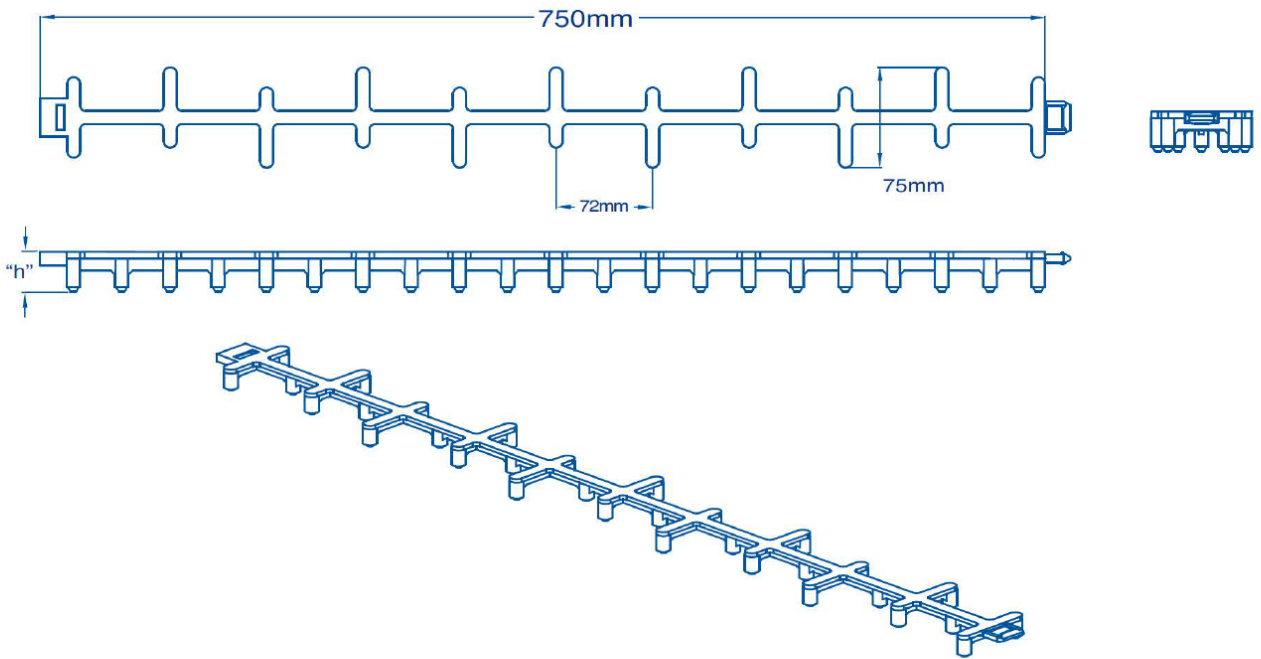
Available in heights from 25mm to 100mm in 5mm increments.

* For heights over 100mm, our combination top deck spacers and single height deck chairs are also available.

* Note: A plastic base to suit, for slab on ground applications, is now available.

The base will friction grip to the plastic deck rails.





Mesh in Tilt-Up Panels