

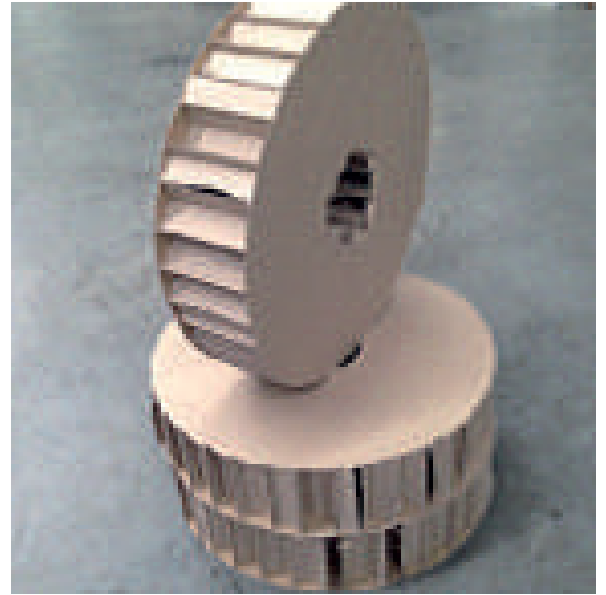
## PRODUCT DESCRIPTION

VoidX™ Polystyrene is a premium grade of expanded polystyrene from Danterr manufactured to conform to the requirements of the Australian Standard AS 1366, Part 3-1992 for expanded polystyrene block materials. VoidX™ Polystyrene is produced in 5000x1200x600 mm blocks which can be custom cut to a variety of dimensions within tight tolerances. All Danterr VoidX™ Polystyrene products are free of ozone depleting substances.

Physical Property	Units	VoidX™	Test Method
Compressive Stress @ 10% Deformation, min	kPa	135	AS 2498.3
Cross-breaking Strength, min	kPa	260	AS 2498.4
Rate of Water Vapor Transmission, max Measured parallel to rise @23°C	µg/m <sup>2</sup> .s	460	AS 2498.5
Dimensional Stability of length width and thickness, max @70°C over 7 days	Percent	1	AS 2498.6
Thermal Resistance, min At a mean temperature of 23°C 50mm sample	M <sup>2</sup> K/W	1.25	AS/NZS 4859.1
Flame Propagation characteristics			
-median flame duration, max	Second	2	AS 2122.1
-eighth value, max	Second	3	
-median volume retained	Percent	40	
-eighth value, min	Percent	37	
Apparent Bulk Density, min	g/f	24	ISO 845
*Please note: Testing to Thermal Resistance AS/NZS 4859.1 although able to be tested is not NATA accredited. All other test specified are NATA accredited.			

## PRODUCT DESCRIPTION

VoidX™ Cardboard degradable, sacrificial void form has an internal expanded paper honeycomb core with face sheets glued top and bottom. VoidX™ Cardboard is manufactured from 400um box board and readily takes up moisture to facilitate decomposition. It will support the weight of construction traffic, reinforcement and wet concrete until the cured concrete gains sufficient strength to be self-supporting. VoidX™ Cardboard is used to separate slabs and g round beams from unstable expansive soils. VoidX™ Cardboard will break down by the absorption of moisture, soil bacteria and pests to create a void beneath the slab or beam. VoidX™ Cardboard is easily cut to facilitate footings and beams and can be supplied pre-bagged in heavy duty 100um plastic bags for use on wet sites or in inclement weather



## BENEFITS

- Load bearing capacity – 3 tonne per/m2
- Environmentally friendly
- High load capacity when dry
- Light weight and easy to install
- Fully glued units are easy to cut with a hand saw on site to facilitate installation
- Can be stacked to achieve greater void depths
- No assembly required
- Can be used to displace concrete where weight and costs are a consideration

Test No.	Thickness (mm)	Peak Force (kN)	Average (kN)	Average (kg)	Average Peak Load (kg/m <sup>2</sup> )
1	200	33.4	32.8	3345	9293
2		32.0			
3		33.1			
4	150	33.4	33.0	3365	9346
5		31.5			
6		34.2			
7	100	33.3	35.1	3578	9940
8		37.3			
9		34.7			
10	75	42.1	43.3	4411	12254
11		44.8			
12		42.9			
13	20	30.2	31.6	3324	8955
14		33.0			
15		31.6			