

# WIND FARM CAPABILITIES



SERVICING AUSTRALIA'S RENEWABLE ENERGY SECTOR

**Danterr**

# CONCRETE PRODUCTS FOR RENEWABLE ENERGY



**Danterr** is a national concrete and construction products supply company. We source and distribute products to Australia's largest construction projects – projects that are meeting Australia's infrastructure, and renewable energy needs. Our sphere of influence includes no less than 15 Australian Wind Farms, plus public transport initiatives, major road upgrades, transport tunnels, sporting venues, bridges and rail lines just to name a few.

Our approach is to research and investigate the specific nature of each individual project and its requirements, and then, work with reliable local and overseas suppliers to ensure that our clients' needs are fulfilled.

Our passion to be at the leading edge of Australian construction capabilities is also a reason why so many building and construction companies choose **Danterr**. We never waiver from sourcing and supplying the best of the best products, not to mention the most revolutionary.

Additionally, **Danterr** has a strong emphasis on sustainability and understand that the alignment of 'greener' outcome parameters is essential to the success of projects in an ever-evolving commercial market place regarding environmental sustainability. **Danterr** approaches all projects with a determination to seek the best solution, which adheres to strict building and construction requirements, and is commercially viable for the client.



Recent projects include...

# PROJECTS



## Coopers Gap

**With up to 123 turbines, Coopers Gap will be one of Australia's largest wind farms upon its completion in 2020.**

The Coopers Gap Wind Farm will have a capacity of 453 MW and produce around 1,510,000 MWh of renewable energy – powering approximately 264,000 average Australian homes.

Coopers Gap Wind Farm is 250 km north-west of Brisbane near Cooranga North, between Dalby and Kingaroy. The site is located on land that's mainly used for cattle grazing and other farming activities. It will connect to a new Powerlink substation along the Western Downs to Halys 275 kV transmission line built by Powerlink.

**Danterr** has supplied high strength Pagel Grout for this massive renewable energy undertaking. This tremendous cementitious product will achieve 140MPa in 28 days thus ensuring absolute stability in wind turbine bases.



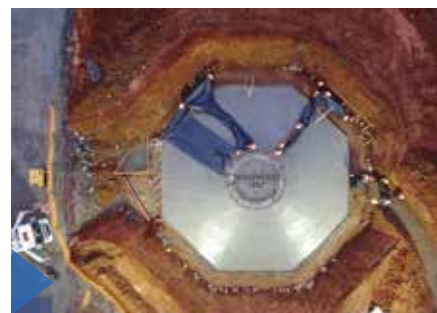
## Cattle Hill

**Construction of Goldwind Australia's 144 MW Cattle Hill Wind Farm on the eastern shore of Lake Echo in the southern side of the Central Plateau of Tasmania, has been slated to be finished by late-2019.**

Once operational, Cattle Hill Wind Farm will produce enough clean energy to power approximately 63,500 Tasmanian homes.

Approvals have been received from Council, State and Commonwealth Regulators for the construction and operation of 48 wind turbine generators and associated infrastructure.

**Danterr** has supplied high strength Pagel Grout for this massive renewable energy undertaking. This tremendous cementitious product will achieve 140MPa in 28 days thus ensuring absolute stability in wind turbine bases.



## Granville Harbour

**The Granville Harbour Wind Farm will comprise of 31 wind turbines that will have the potential to produce 112 MW of clean, renewable energy.**

This is enough kinetically generated electricity to power around 46,000 averaged sized Tasmanian family homes. Granville Harbour Wind Farm will capitalise on Tasmania's enviable wind potential whilst becoming one of the corner stones in the goal of Tasmania becoming 100 percent reliant on renewable energy by 2022.

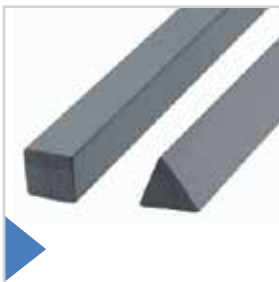
For this ground-breaking Tasmanian project, **Danterr** supplied the sacrificial formwork solution Pecafil® which has been successful in assisting each turbine to be 'back-filled' against which allows for more stability in each turbine base.

Led by a specialist project team, the wind farm is expected to be complete by mid-2020. Vestas has been appointed as the project's primary Engineering, Procurement and Construction (EPC) Contractor.



# WIND FARM

## REINFORCING / FORMWORK



### Concrete Rail Spacers Square / Triangle

Concrete Rail Spacers are used to ensure that specified concrete cover to the reinforcement is achieved. They come in a range of profiles; square, round, square with groove and triangle. Custom-made spacers are available.



### Concrete Spacers

Cast concrete spacers ensure that the specified concrete cover to the reinforcement for structures and structural elements is achieved, both before and during concreting. Concrete spacers are commonly used for the walls, columns and foundations in civil concreting applications.



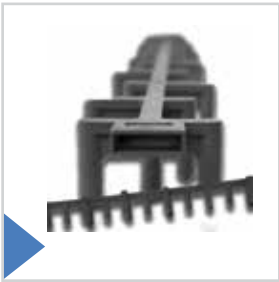
### Pecafil®

'Pecafil® is the perfect formwork solution for the in-ground construction of pile caps and ground beams as to provide fast and accurate formwork installation. Pecafil® is suitable for a range of applications, using standard or custom-manufactured elements. In circular formwork applications, virtually any radius can be accommodated.



### Tie Wire Coils

Tie wire coils come in a standard diameter of 1.57mm which is the industry standard required to cover various civil concreting applications. Wire comes in a galvanized, stainless or black finish as to resist corrosion; coils are convenient enough to carry yet contain enough wire for a huge number of ties.



### Deck Rail Spacers

Deck Rail Spacers are a continuous spacer for formwork applications. The male and female connections at either end will join rail on rail to any given length. Once connected, the clip will not separate. Clipping bar chairs onto the reinforcement after the reinforcement has been placed is now eliminated.



### Fiberglass Reinforcement

Fiberglass rebar has extensive strength capacity due to its form and offers a maximum bond with the concrete. The biggest benefit of fiberglass reo is its high corrosion resistance. Concrete absorbs water and therefore iron reo can corrode. Fiberglass reo has a very low corrosion rate and will last for approx. 200 years in any concrete slab.



### Lanotec Form Oil

A ready to use concrete release agent for formwork, precast and tilt-up panel applications.



### Formply

Formply is made with a radiata pine core with a harder density surface. Both hardwood surfaces are faced with a high-density resin finish, that is usually black in colour and very smooth. Formply is ideally suited for use in concrete formwork and can be constantly reused.

# WIND FARM

## CONCRETE PLACEMENT



### Curing Blanket

Concrete curing blankets effectively trap water, providing improved hydration and a more evenly cured concrete slab.



### Curing Compound

Danterr supplies the following variances of Concrete Curing Compound - Aliphatic Alcohol Evaporation Retardant, Bituminous, Water Based XDS, Water Based Acrylic and Wax Based.





### Trowel Machine

Power Trowels create a level, smooth finish on a large, flat area of concrete. These machines are powered by genuine Honda motors and come with a smooth pitch control for even finishing. They also feature an emergency engine kill for operator safety (if handle is released during trowelling), a lifting bar, lifting hook and a chrome guard for ease of cleaning.



### Concrete Vibrator

Vibrators with a flexible shaft are built with the improved pendulum design. Concrete vibrators are suitable for use in all types of concrete and a wide variety of construction sites. Vibration parameters have been optimised leading to a maximum output.



### Screeds

**Danterr** provides lightweight aluminium screeds with an easy to clean powder-coated finish. Screeds include a reversible clamped handle, which essentially doubles the life of the screed. Internal strength support bars and a rounded edge for floating are also features as is the screed's sharp edge for cutting. A built-in vial in the handle allows you to screed and level in the same stroke.



### Bull Floats

Bull Floats are adjustable and controlled by twisting the handle. This enables the tilt of the blade to accomplish the prime finish to the concrete. A tilted blade on an angle produces a smoother result. Raising nor lowering of the handle is needed; simply twist for optimum results.



### Drive Units

Portable Drive Units are used to drive / power vibration shafts and submersible pumps. Units are fitted with either genuine Honda GX160 or Hatz diesel engines. All units are fitted with a three-claw coupling.



### Gumboots

**Danterr** supplied Stimela Gumboots have a steel toe cap, steel midsole and metatarsal protection. With an average weight of 2.4kg, they are hard wearing and have excellent grip and sole support.

# WIND FARM

## GROUT INSTALL



### Pagel Grout

**Danterr** has exclusive access to the entire Pagel Grout High Strength range including V1/30HF and V1/50. These grout products achieve a high MPa rating in 24 hours before further strengthening occurs in seven days. Pagel Grout will achieve up to 140MPa in 28 days and is therefore the highest performing cementitious product of the 21st century.



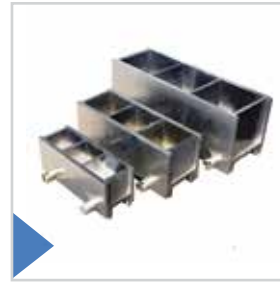
### Pagelastic Sealer Kit

Pagelastic Sealer Kits are crack bridging floor and wall coatings suitable for substrates of concrete, mortar and masonry. The kit provides protection against penetration of thawing-salt within splashing zones.



### Paddle Mixer and Grout Pump

For large size grouting jobs we recommend using a grout pump - either PA-BEC I,II or PA-BEC V.



### Grout Cubes

Grout Cubes are available in moulds constructed of plastic or various metals. Metal moulds are rugged and meet specific ASTM and AASHTO standards. The light-weight plastic moulds perform well with internal quality control programs.



### Grout Install Service

**Danterr** provide a grout installation expert when sites are pouring grout. Our experts have decades of experience regarding high strength grout and Wind Turbines.



### MPa Testing

The MPa of new concrete / high strength grout is determined using a cylinder-testing process. **Danterr** have the capacity to bore cylinders after the surface has dried, or cured, for select periods up to 28 days. The cylinders must be transported carefully to testing labs, where they are placed on testing machines.



### Bunded Pallets

Bunded pallets can support 4x 205 litre drums and are engineered to contain spillage of most materials. Bunded pallets come with a formed internal draining floor with a holding capacity of 240 litres of spilled liquid. A galvanized structural platform provides stability. All pallets have a 50mm threaded drain plug for easy drainage.



### Curing Compound

**Danterr** supplies the following variances of Concrete Curing Compound - Aliphatic Alcohol Evaporation Retardant, Bituminous, Water Based XDS, Water Based Acrylic and Wax Based.



**Danterr**

**T: 1800 262 383**  
**E: [sales@danterr.com](mailto:sales@danterr.com)**

**[www.danterr.com](http://www.danterr.com)**

Melbourne | Sydney | Adelaide | Brisbane | Darwin | Perth | Hobart