



Pecafil is a versatile, sacrificial form-working

material perfect for an array of specifications that don't comply with standard form products. The strength and flexibility of **Pecafil** makes it the natural choice for a myriad of applications including ground beams, footings and bases, pile caps, construction joints (stop ends), special shapes or curves, void formation, ribbed and waffle slabs, penetrations, recesses, temporary fencing and safety screens.

In sacrificial applications, placing approximately 200mm of backfill against the **Pecafil** stabilises the material prior to the concrete pour. You can just set and forget!

Pecafil formwork system speeds up construction, improves build quality, reduces the need for skilled labour while reducing cost.

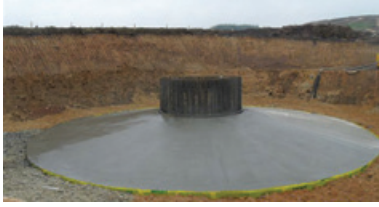
Pecafil is the result of many years of intensive research and is a tried and tested solution for today's construction professionals.

The specially manufactured material is constructed from a steel mesh in a wide range of sheet and strip sizes with various wire diameters, shaped to meet your needs. Its distinctive outer layer is heat-shrunk polyethylene, made from non-toxic, naturally occurring hydrocarbons. The formwork is environmentally friendly, has no impact on groundwater and is both recyclable and biodegradable.

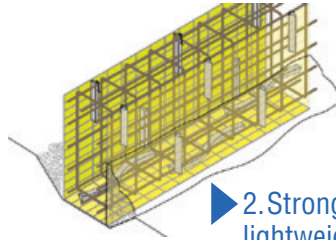


Key Benefits

PECAFIL
THE INNOVATIVE SOLUTION TO
CONVENTIONAL FORMWORK



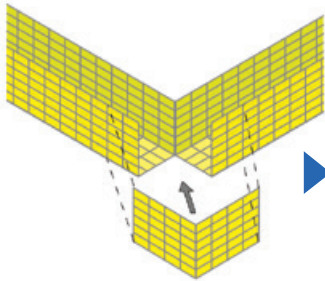
▶ 1. Sacrificial.



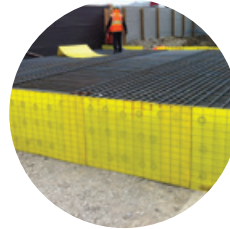
▶ 2. Strong, yet lightweight.



▶ 3. Can be site-fabricated as required, or pre-formed prior to delivery.



▶ 4. Suitable for High Speed Formwork - Pecafile is designed for fast assembly. No hammer, nails or saws, just tie wire.



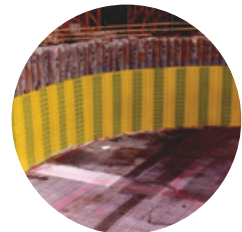
▶ 5. Easy Installation Procedure - Because it is preformed, it is easily assembled using on site labour.



▶ 6. A wide range of standard and bespoke panels and forms for virtually all applications.



▶ 7. Saves time and costs on blinding, labour and spoil removal.



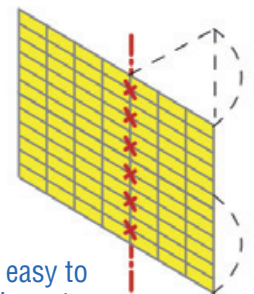
▶ 8. Curved or complicated foundation forms can easily be produced on-site.



▶ 9. No stripping, cleaning or return of the formwork.



▶ 10. Light enough for just one person to handle – no need for cranes; ready for rapid assembly.



▶ 11. Fast and easy to install – can be cut with basic tools.

Danterr